

PULL-BACK PIN-ARBOR CHUCK

Inside dia. clamping

PA Pin-Arbor Power Chuck®

"Strong Clamping" "High Precision" "Pull-Back" "High Rotation" "Dust Protection" "Design Specification"



PA-25 · 35



PA-55 · 75

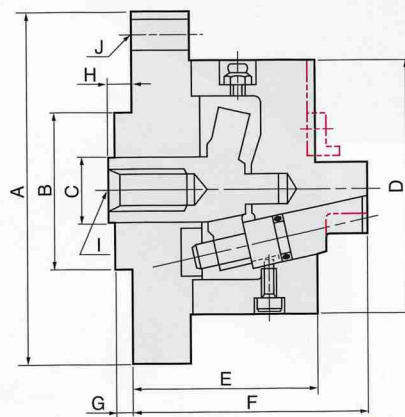
● The material of the body is Ductile Cast Iron considering anti-abrasion and anti-worn out.

"PULL-BACK" System

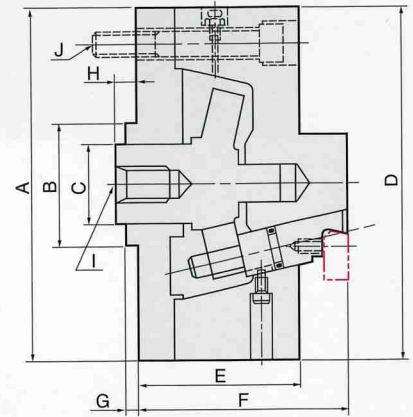
The PA [Pin-Arbor Power Chuck] is I.D. clamping chuck with a perfect pull-back function of chucking pins. 3 portions of chucking pins clamp the work-pieces with balancing bending stress each other. Therefore, ① The PA Chuck has high concentricity and strong clamping force, ② The squareness and parallelism to standard end surface after machining are excellent. ③ The jaw stroke is big enough to load and remove the work-pieces easily. ④ Also, we are available to design various design of chucks on request basis. The PA Chuck is adopted by a lot in Factory Automation line as finishing operation chuck or as base chuck of combination chuck, because of its excellent features.

※ Chucking pins are easy interchangeable from front side of a chuck.

Dimension diagram



PA-25 · 35



PA-55 · 75

Dimensions

Model No.	A	B ^{h6}	C	D	E	F	G	H max.	H min.	I	J
PA-25	135	60	20	85.0	62	80.0	7	12	8	M12 P1.75 x25	3(φ11) P.C.D.118
PA-35	135	60	25	98.5	65	88.4	7	12	8	M16 P2.0 x28	3(φ11) P.C.D.118
PA-55	190	80	32	190.0	95	120.0	7	18	8	M16 P2.0 x30	3-M16 P.C.D.150
PA-75	225	80	50	225.0	100	132.5	7	18	8	M24 P3.0 x35	6-M16 P.C.D.180

Special products larger than the PA-125 are also designed and manufactured.

Standard specifications

● PA bodies are used with the ductile cast iron for considering the strength and resistance.

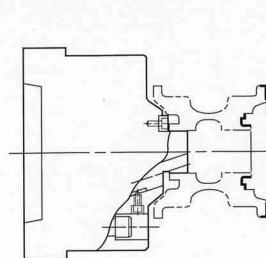
Model No.	Max. Clamping force kN (kgf)	Max. Pull force kN (kgf)	Max. Rotation speed min ⁻¹	Jaw stroke (Dia.) mm	Standard clamping range mm	Chuck weight kg	Body GD ² N · m ² (kgf · m ²)
PA-25	22.1 (2,250)	11.8 (1,200)	5,000	1.7	17~25	3.5	0.13 (0.013)
PA-35	33.1 (3,380)	17.6 (1,800)	4,500	1.7	25~35	4.3	0.25 (0.026)
PA-55	55.3 (5,640)	29.4 (3,000)	3,500	4.2	35~55	18.4	3.23 (0.330)
PA-75	70.1 (7,150)	37.2 (3,800)	2,500	4.2	55~75	35.0	8.62 (0.880)

* The dimensions in this table are subject to change without notice.

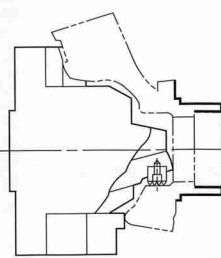
With using jawpieces (top jaws) on chucking pins, it is possible for PA-55 and PA-75 to clamp larger diameter than standard.

Practical examples

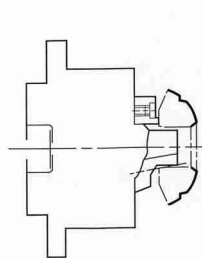
Each type of PA chuck can be used as a base chuck for combination designs, because it can clamp a work-piece very precisely.



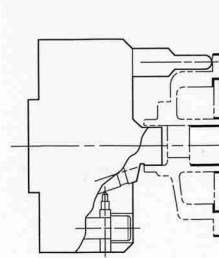
Work-piece : Roller
Clamping dia : φ22



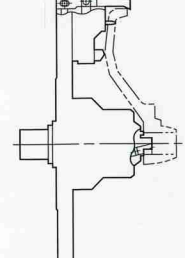
Work-piece : Knuckle
Clamping dia : φ67



Work-piece : Bevel gear
Clamping dia : φ24



Work-piece : Housing
Clamping dia : φ36



Work-piece : Knuckle
Clamping dia : φ70