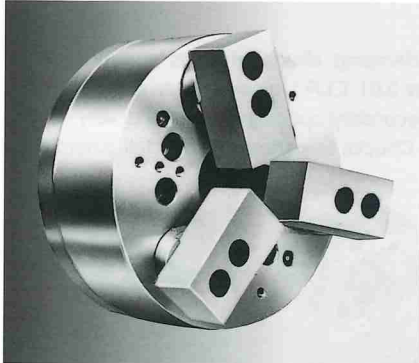


PULL-BACK PIN-ARBOR CHUCK

Outside dia. clamping

OPN Pin-Arbor Power Chuck® Standard series

"Strong Clamping" "High Precision" "Pull-Back" "Equalize Function" "Dust Protection" ●Soft Jaw Specification



"PULL-BACK" System

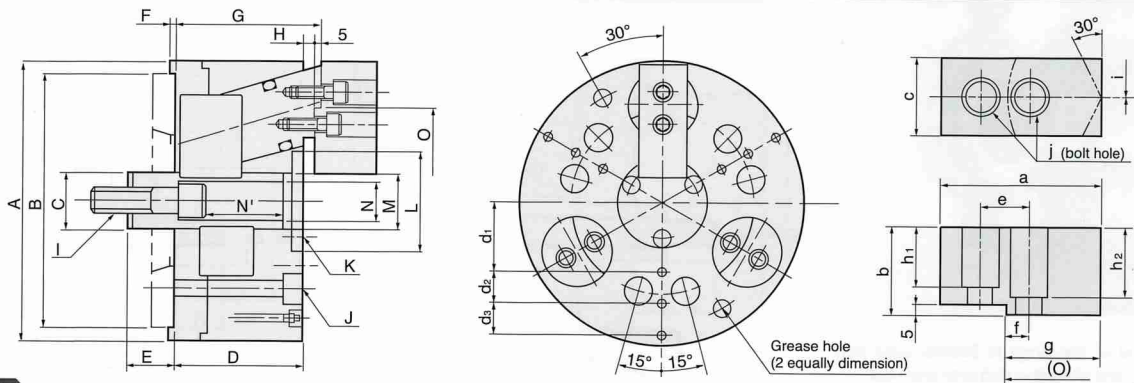
The OPN [Pin-Arbor Power Chuck] is O.D. clamping power chuck which is excellent at controlling parallelism and thickness with having "Pull-Back" clamping function. Furthermore, OPN Chuck features soft jaws system having excellent repeatability and interchangeability which allows any user to form soft jaws by themselves with following the forming procedure and assemble them to any OPN Chucks with keeping high-concentricity.

- The forming ring of jaws is provided with the OPN series as standard.

- High precision interchangeability of formed jaws
- High durability pin design
- Two points greasing on the chuck front
- Compact chuck body periphery
- Conventional slant angles are employed for pins

※ We are available to design top tooling and parts on request basis.

Dimension diagram



PAT.P

Dimensions

Model No.	A	B H7	C	D	E (min.~max.)	F	※G	※H	I	J (P.C.D.)	K (P.C.D.)	L
OPN-5	130	80	22	70	16 (12~19)	5	82	7	M12	3-M8 (100)	M4 (35)	45.5
OPN-6	165	140	28	90	29 (23~33)	5	103	8	M16	6-M10 (104.77)	M5 (43)	55.5
OPN-8	210	190	45	95	33 (28~38)	5	109	9	M20	6-M12 (133.35)	M6 (55)	68.5
OPN-10	254	230	55	110	40 (32~47)	5	126	11	M24	6-M16 (171.45)	M6 (70)	85.5
OPN-12	300	230	60	125	40 (32~47)	5	141	11	M27	6-M16 (171.45)	M6 (75)	90.5

Model No.	M	N	N'	O	a	b	c	d1	d2	d3	e	f	g	h1	h2	i	j
								M(10)									
OPN-5	28	—	—	84	60.5	30	30	35	—	—	16	6	40.0	17	22	2	M8
OPN-6	34	—	—	104	63.0	35	35	40	25	—	20	8	37.5	20	25	35	M10
OPN-8	45	32	58	134	82.0	47	40	50	25	—	25	12	49.0	32	37	40	M12
OPN-10	55	39	64	160	103.0	51	50	55	25	25	32	13	58.0	36	41	50	M14
OPN-12	60	43	64	200	125.0	57	60	70	25	25	37	18	80.0	42	47	60	M16

Standard specifications

※ "G","H" values are diameters which clamped standard specification.

Model No.	Max. Clamping force kN (kgf)	Max. Pull force kN (kgf)	Jaw stroke (Dia.) mm	Clamping range mm	Max. Rotation speed min ⁻¹	Chuck weight kg	Body GD ² N · m ² (kgf · m ²)
OPN-5	20.6 (2,100)	11.8 (1,200)	3.7	10~85	4,000	7.2	0.59 (0.06)
OPN-6	31.4 (3,200)	17.6 (1,800)	5.3	35~100	3,500	15.0	1.96 (0.20)
OPN-8	47.0 (4,800)	26.5 (2,700)	5.3	40~160	3,000	26.0	5.59 (0.57)
OPN-10	61.7 (6,300)	34.3 (3,500)	8.0	50~200	2,500	44.0	13.90 (1.42)
OPN-12	79.3 (8,100)	44.1 (4,500)	8.0	50~240	2,000	69.0	30.40 (3.10)

* The above clamping force values were obtained by actual measurements the maximum draw-bar thrust.

* The dimensions in this table are subject to change without notice.

Practical examples

This figure shows an example for chucking a cross key with a conventional product.

