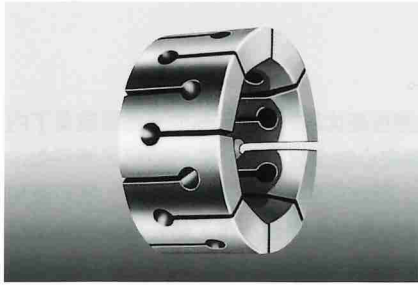


筒夹选定表

短距系列



本筒夹适用于拉杆型、两顶尖型心轴的短距系列。

- 具有精密的对偶平面。
- 心轴与筒夹的相互位置即便有变化也无影响。
- 保持范围错位时可以追加研磨。

适当的拉杆推力

为了使“大矩锁定”心轴的操作高效有效，需要适当设定拉杆的推力。推力过小工件打滑，过大则将损毁扩展器。

拉杆推力 最大		
机身型号	kN	(kgf)
AC-8100	3.43	( 350)
AC-8200	3.43	( 350)
AC-8300	5.88	( 600)
AC-8400	11.76	(1200)
AC-8500	19.6	(2000)
AC-8600	29.4	(3000)
AC-8700	34.3	(3500)

AC-8100-M · AC-8100 · AC-7100-A 用		筒夹宽度
保持范围	筒夹型号	
12.70~12.95	AC-7101	15.0
12.96~13.20	AC-7102	
13.21~13.49	AC-7103	
13.50~13.74	AC-7104	
13.75~14.00	AC-7105	
14.01~14.27	AC-7106	
14.28~14.53	AC-7107	
14.54~14.78	AC-7108	
14.79~15.04	AC-7109	
15.05~15.32	AC-7110	
15.33~15.57	AC-7111	
15.58~15.85	AC-7112	
15.86~16.10	AC-7113	
16.11~16.38	AC-7114	
16.39~16.64	AC-7115	
AC-8200-M · AC-8200 · AC-7200-A 用		筒夹宽度
保持范围	筒夹型号	
15.06~15.32	AC-7201	18.3
15.33~15.57	AC-7202	
15.58~15.85	AC-7203	
15.86~16.10	AC-7204	
16.11~16.38	AC-7205	
16.39~16.64	AC-7206	
16.65~16.92	AC-7207	
16.93~17.17	AC-7208	
17.18~17.45	AC-7209	
17.46~17.70	AC-7210	
17.71~17.96	AC-7211	
17.97~18.21	AC-7212	
18.22~18.47	AC-7213	
18.48~18.72	AC-7214	
18.73~18.97	AC-7215	
18.98~19.23	AC-7216	
19.24~19.48	AC-7217	
19.49~19.74	AC-7218	
19.75~20.00	AC-7219	
20.01~20.24	AC-7220	

AC-8300-M · AC-8300 · AC-7300-A 用		筒夹宽度
保持范围	筒夹型号	
18.24~18.47	AC-7301	21.3
18.48~18.72	AC-7302	
18.73~18.97	AC-7303	
18.98~19.23	AC-7304	
19.24~19.48	AC-7305	
19.49~19.74	AC-7306	
19.75~20.00	AC-7307	
20.01~20.24	AC-7308	
20.25~20.50	AC-7309	
20.51~20.75	AC-7310	
20.76~21.01	AC-7311	
21.02~21.26	AC-7312	
21.27~21.51	AC-7313	
21.52~21.74	AC-7314	
21.75~22.00	AC-7315	
22.01~22.20	AC-7316	
22.21~22.45	AC-7317	
22.46~22.73	AC-7318	
22.74~22.99	AC-7319	
23.00~23.27	AC-7320	
23.28~23.52	AC-7321	
23.53~23.78	AC-7322	
23.79~24.05	AC-7323	
24.06~24.33	AC-7324	
24.34~24.59	AC-7325	
24.60~24.87	AC-7326	
24.88~25.12	AC-7327	
25.13~25.40	AC-7328	
AC-8400-M · AC-8400 · AC-7400-A 用		筒夹宽度
保持范围	筒夹型号	
22.23~22.73	AC-7401	23.9
22.74~23.27	AC-7402	
23.28~23.80	AC-7403	
23.81~24.33	AC-7404	
24.34~24.87	AC-7405	
24.88~25.40	AC-7406	
25.41~25.93	AC-7407	
25.94~26.47	AC-7408	
26.48~27.00	AC-7409	
27.01~27.53	AC-7410	
27.54~28.04	AC-7411	
28.05~28.55	AC-7412	
28.56~29.11	AC-7413	
29.12~29.67	AC-7414	
29.68~30.23	AC-7415	
30.24~30.78	AC-7416	
30.79~31.34	AC-7417	
31.35~31.90	AC-7418	
31.91~32.46	AC-7419	
32.47~33.00	AC-7420	

AC-8500-M · AC-8500 · AC-7500-A 用		筒夹宽度
保持范围	筒夹型号	
28.58~29.11	AC-7501	28.6
29.12~29.67	AC-7502	
29.68~30.23	AC-7503	
30.24~30.78	AC-7504	
30.79~31.34	AC-7505	
31.35~31.90	AC-7506	
31.91~32.46	AC-7507	
32.47~32.99	AC-7508	
33.00~33.53	AC-7509	
33.54~34.06	AC-7510	
34.07~34.59	AC-7511	
34.60~35.13	AC-7512	
35.14~35.66	AC-7513	
35.67~36.20	AC-7514	
36.21~36.73	AC-7515	
36.74~37.26	AC-7516	
37.27~37.82	AC-7517	
37.83~38.38	AC-7518	
38.39~38.94	AC-7519	
38.95~39.50	AC-7520	
39.51~40.06	AC-7521	
40.07~40.61	AC-7522	
40.62~41.17	AC-7523	
41.18~41.70	AC-7524	
AC-8600-M · AC-8600 · AC-7600-A 用		筒夹宽度
保持范围	筒夹型号	
37.27~37.82	AC-7601	31.0
37.83~38.38	AC-7602	
38.39~38.94	AC-7603	
38.95~39.50	AC-7604	
39.51~40.06	AC-7605	
40.07~40.61	AC-7606	
40.62~41.17	AC-7607	
41.18~41.71	AC-7608	
41.72~42.24	AC-7609	
42.25~42.77	AC-7610	
42.78~43.31	AC-7611	
43.32~43.84	AC-7612	
43.85~44.38	AC-7613	
44.39~44.91	AC-7614	
44.92~45.44	AC-7615	
45.45~45.97	AC-7616	
45.98~46.51	AC-7617	
46.52~47.04	AC-7618	
47.05~47.57	AC-7619	
47.58~48.11	AC-7620	
48.12~48.64	AC-7621	
48.65~49.17	AC-7622	
49.18~49.71	AC-7623	
49.72~50.24	AC-7624	

AC-8600-M · AC-8600 · AC-7600-A 用		筒夹宽度
保持范围	筒夹型号	
50.25~50.77	AC-7625	31.0
50.78~51.31	AC-7626	
51.32~51.84	AC-7627	
51.85~52.37	AC-7628	
52.38~52.91	AC-7629	
52.92~53.44	AC-7630	
AC-8700-M · AC-8700 · AC-7700-A 用		筒夹宽度
保持范围	筒夹型号	
49.20~49.71	AC-7701	33.3
49.72~50.24	AC-7702	
50.25~50.77	AC-7703	
50.78~51.31	AC-7704	
51.32~51.84	AC-7705	
51.85~52.37	AC-7706	
52.38~52.91	AC-7707	
52.92~53.44	AC-7708	
53.45~53.98	AC-7709	
53.99~54.51	AC-7710	
54.52~55.04	AC-7711	
55.05~55.58	AC-7712	
55.59~56.11	AC-7713	
56.12~56.64	AC-7714	
56.65~57.18	AC-7715	
57.19~57.71	AC-7716	
57.72~58.24	AC-7717	
58.25~58.78	AC-7718	
58.79~59.32	AC-7719	
59.33~59.85	AC-7720	
59.86~60.38	AC-7721	
60.39~60.91	AC-7722	
60.92~61.44	AC-7723	
61.45~61.98	AC-7724	
61.99~62.51	AC-7725	
62.52~63.02	AC-7726	
63.03~63.53	AC-7727	
63.54~64.03	AC-7728	
64.04~64.54	AC-7729	
64.55~65.05	AC-7730	
65.06~65.61	AC-7731	
65.62~66.14	AC-7732	
66.15~66.66	AC-7733	
66.67~67.21	AC-7734	
67.22~67.74	AC-7735	
67.75~68.30	AC-7736	
68.31~68.86	AC-7737	
68.87~69.42	AC-7738	
69.43~69.98	AC-7739	
69.99~70.54	AC-7740	
70.55~71.10	AC-7741	
71.11~71.65	AC-7742	

AC7101~7115, AC7201~7220, AC7301~7328 专用于轻切削、研削加工。

■ 的是重叠的筒夹。请尽可能地使用上一档次的轴。