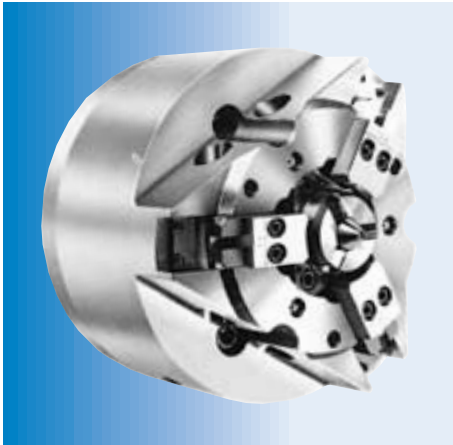


Combination Design Chucks

Design Specification



Jaw-escaping type chuck & Face driver

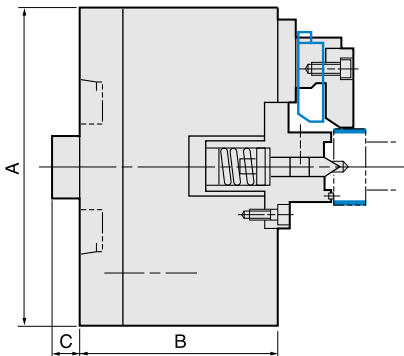
Advantages

- It allows to machine the clamping portion too which enables to reduce one operation.
- Only the lightweight jawpiece move ahead, which enables not to increase the burden to the spindle.
- It is designed to prevent dust and cutting chips into the chuck body.
- It is able to use general closed center type long stroke rotation cylinder.
- ※ It is able to design with considering the total length of the chuck, the escaping value of the jaws, hardened jaws, the face driver etc according to each work-piece or cutting condition.

Operation procedures

- ① Escape the jaws first and process the O.D. of clamping portion by the face driver which is set at the center portion of the chuck.
- ② Push the draw bar to the chuck and move the jaws ahead to the clamping portion. Do heavy-cutting to the O.D. except the clamping portion while the jaws clamp with swinging motion.
- ③ If the work-pieces require tight accuracy, pull the draw bar to the spindle and make the jaws escape then finish the whole O.D. by the face driver.

Dimension diagram



Specifications for reference

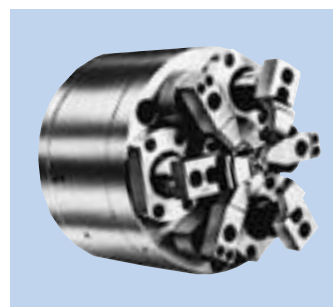
● For further information, please contact our oversea department.

Size	A	B	C	Rotation speed min ⁻¹	Allowable thrust kN (kgf)	Clamping range mm	Jaw escaping travel mm
	O.D. mm	Thickness mm	Stroke mm				
8	215	140	10 ← 15 → 35	2300	24.5 (2500)	25~ 60	10
10	260	162	17 ← 22 → 52	1700	24.5 (2500)	50~100	17
12	300	184	40 ← 45 → 80	1700	24.5 (2500)	25~140	22

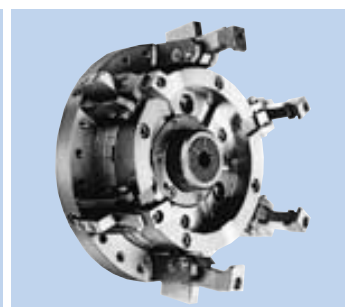
Practical examples

Other Combination Design Chucks

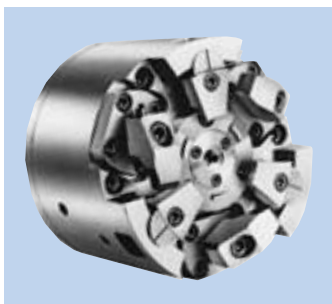
To solve high levels of technical problems that can not be handled with conventional chucks, we offer various combination designs which allow multiple functions to be integrated in to one chuck. Those combination design chucks are created by our superb creativity and advanced manufacturing technologies accumulated for many years, as well as reliable after-sale services, and also have gained high reputation on the market in terms of performance, price, and delivery time. And that is clearly shows in their track records. They will surely meet your specific requirements.



Pin Arbor chuck & Jaw-escaping chuck & Moving stopper
For : Gear blanks (All machining)



Special Collet chuck & Face Clamper
For : Torque converters



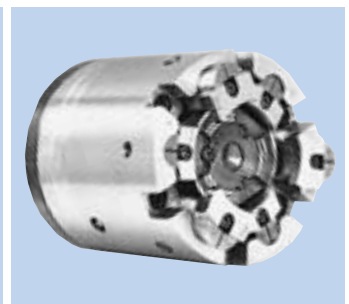
Pin Arbor chuck (OPA) & Face Clamp chuck (SFC)
For : Main bearing, Sub bearing



Face Clamp chuck & Diaphragm chuck
For : Scroll Parts



Pin Arbor chuck & Finger chuck
For : Kunkles & Rear Axles



Duble Pin Arbor type chuck (O.D. chuck & Face Clamp)